

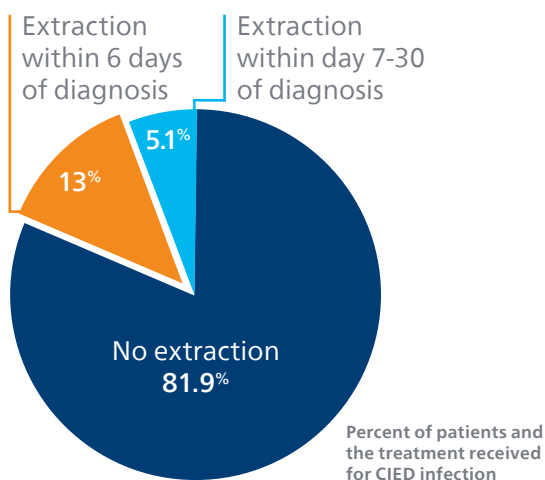
## ACC.22 late-breaker

# >8 in 10 patients are not receiving guideline-driven care<sup>1</sup>

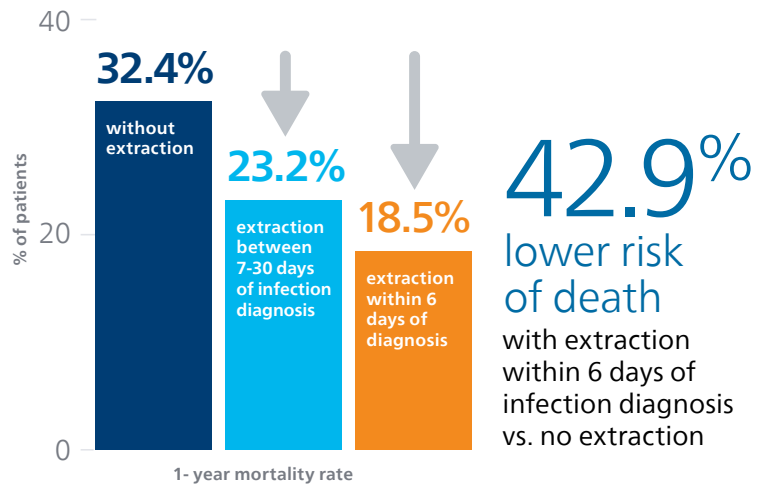
*"This study highlights the life-threatening nature of device infections and the significant opportunities to improve care in these complex patients. The findings also emphasize the importance of timely diagnosis and complete treatment. Making things better for patients tomorrow will require working with clinicians across various specialties to advance education to help diagnose CIED infections and deliver timely care. The opportunity to ensure all patients have access to guideline recommended care is not only imperative, but life-saving for patients across the world."*

- Jonathan Piccini, MD, MHS, Duke Director of Cardiac Electrophysiology

### Low rates of HRS/EHRA Class I guideline care<sup>2,3</sup>



### Significant decrease in 1-year mortality with timely extraction<sup>1</sup>



### Largest ever real-world analysis of CIED infection treatment included:



100% Medicare sample from January 2006 through December 2019 (14 years of data)



More than 1 million patients with a CIED (N=1,065,549)

### Additional results

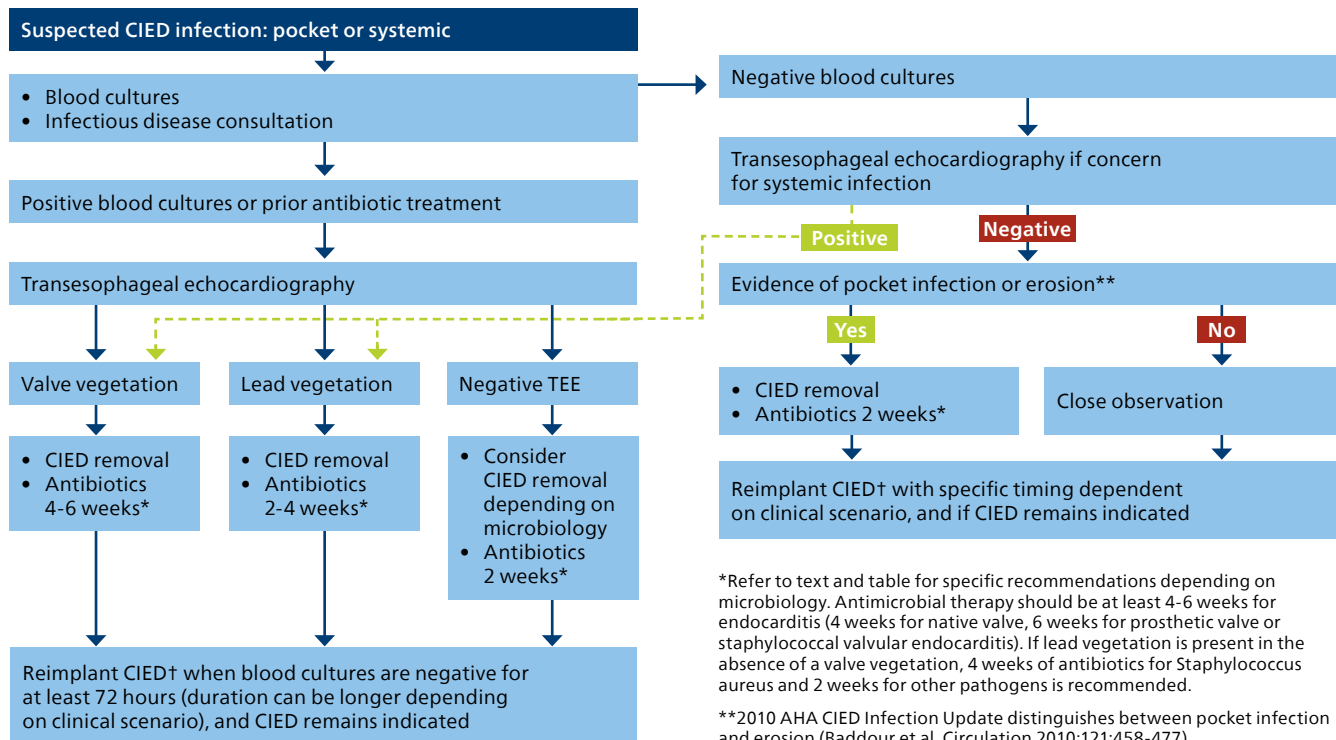


- Median age of 75 years
- Infection rate was 1.1%
- Any extraction was associated with lower mortality when compared to no extraction (adjHR 0.73, 95% CI 0.67-0.81, p<0.001)

# CIED infection is an HRS/EHRA Class I indication for referral and for full system removal<sup>2,3</sup>

Among patients with CIED infection, there is a lack of guideline adherence and a need to improve guideline-directed care. Extraction for CIED infection is potentially life-saving. Follow the guidelines.

## Infection diagnosis decision trees from 2017 HRS guidelines



This information is directly from the 2017 HRS Consensus Statement.<sup>2</sup>



Learn more and download a pocket guide of the HRS 2017 guidelines  
[Philips.com/deviceinfection](https://www.philips.com/deviceinfection)

1. Pokorney, Sean D., et al. "Low Rates of Guideline Directed Care Associated with Higher Mortality in Patients with Infections of Pacemakers and Implantable Cardioverter Defibrillators." ACC 2022 Late Breaker Clinical Study Presentation. April 3, 2022.
2. Kusumoto, F. M., et al. (2017, Dec). 2017 HRS expert consensus statement on cardiovascular implantable electronic device lead management and extraction. Heart Rhythm, 14(12), e503-e551.
3. Blomström-Lundqvist, C., et al. (2020, Jun 1). European Heart Rhythm Association (EHRA) international consensus document on how to prevent, diagnose, and treat cardiac implantable electronic device infections-endorsed by HRS, APHRS, LAHRS, ISCVI, ESCMID in collaboration with EACTS. Eur Heart J, 41(21), 2012-2032. <https://doi.org/10.1093/eurheartj/ehaa010>.

