

2021 AV access/fistula repair diagnostic and intervention coding sheet

Patient: _____ Date of birth: _____ Sex: M F Date of procedure: _____ Refer MD: _____ Diagnosis: _____ Complications: _____

CPT code Description

Non-Coronary Intravascular Ultrasound (IVUS) (IVUS codes are add-on codes to a primary procedure)

- ____ +37252 IVUS, non-coronary, incl radiological S&I initial non-coronary vessel
- ____ +37253 IVUS, each additional non-coronary vessel (use with 37252)

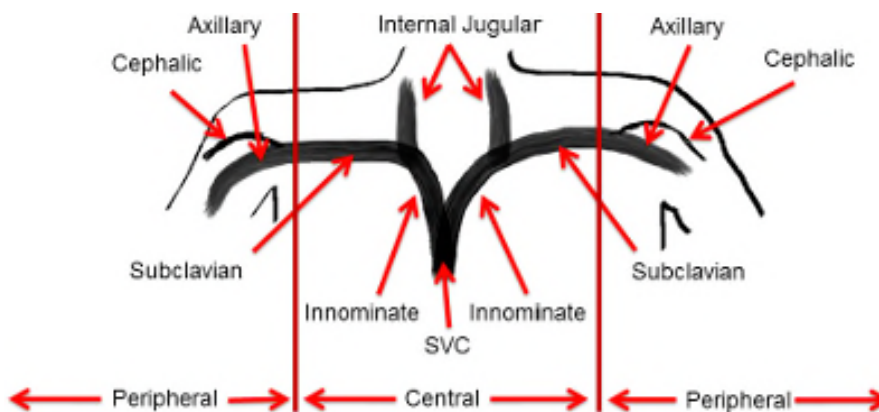
Dialysis Circuit

- ____ 36901 Introduction of needle(s) and/or catheter(s), dialysis circuit, with diagnostic angiography of the dialysis circuit, including all direct puncture(s) and catheter placement(s), injection(s) of contrast, all necessary imaging from the arterial anastomosis and adjacent artery through entire venous outflow including the inferior or superior vena cava, fluoroscopic guidance, radiological supervision and interpretation and image documentation and report
- ____ 36902 ...with transluminal balloon angioplasty, peripheral dialysis segment, inc all imaging and radiological S&I necessary to perform the angioplasty
- ____ 36903 ...with transcatheter placement of intravascular stent(s), peripheral dialysis segment, including all imaging and radiological S&I necessary to perform the stenting, and all angioplasty within the peripheral dialysis segment
- ____ 36904 Percutaneous transluminal mechanical thrombectomy and/or infusion for thrombolysis, dialysis circuit, any method, including all imaging and radiological supervision and interpretation, diagnostic angiography, fluoroscopic guidance, catheter placement(s), and intraprocedural pharmacological thrombolytic injection(s)
- ____ 36905 ...with transluminal balloon angioplasty, peripheral dialysis segment, inc all imaging and radiological S&I necessary to perform the angioplasty
- ____ 36906 ...with transcatheter placement of intravascular stent(s), peripheral dialysis segment, inc all imaging and radiological S&I necessary to perform the stenting, and all angioplasty within the peripheral dialysis circuit
- ____ +36907 Transluminal balloon angioplasty, central dialysis segment, performed through dialysis circuit, including all imaging and radiological S&I required to perform angioplasty (List separately in add to code for primary procedure)
- ____ +36908 Transcatheter placement of intravascular stent(s), central dialysis segment, performed thru dialysis circuit, inc all imaging radiological S&I required to perform stenting, and all angioplasty in central dialysis segment (List separately in addition to code for primary procedure)
- ____ +36909 Dialysis circuit permanent vascular embolization or occlusion (inc main circuit or any accessory veins), endovascular, inc all imaging and radiological S&I ... (List separately in addition to code for primary procedure)

HCPCS Description and device name

HCPCS supply/device codes

- ____ C1753 Catheter, intravascular ultrasound (*Visions PV Intravascular Ultrasound catheter*)
- ____ C1757 Catheter, thrombectomy/embolectomy (*QuickClear Mechanical Thrombectomy System*)



Dialysis circuit

Peripheral dialysis segment

- The portion of the dialysis circuit beginning at the arterial anastomosis and extending to the central dialysis segment

Central dialysis segment

- The central segment extends from the peripheral segment all the way to the right atrium

All coding, coverage, billing and payment information provided herein by Philips is gathered from third party sources and is subject to change. This information is intended to serve as a general reference guide and does not constitute reimbursement or legal advice. Philips does not guarantee that the use of any particular codes will result in coverage or payment at any specific level. This information may include some codes for procedures for which Philips currently offers no cleared or approved products. In those instances, such codes have been included solely in the interest of providing users with comprehensive coding information and are not intended to promote the use of any products.

