

HEALTHCARE IT'S EVOLUTION IN 2017

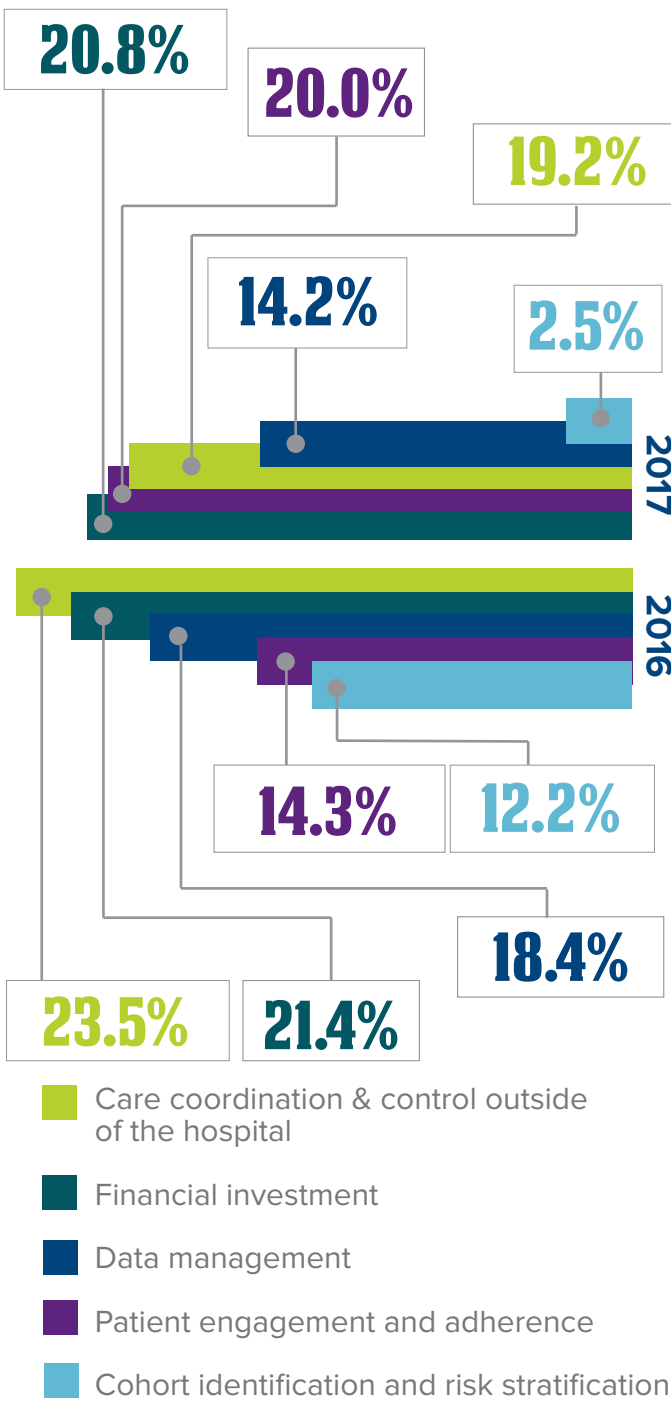
Connecting care for continuous health

Hospitals and IDNs have been investing in new technologies that support collaborative care across the continuum, according to surveys conducted from 2013-2016 by HIMSS Analytics on behalf of Philips Healthcare. In this 2017 survey update, as hospitals and IDNs look to expand their population health initiatives to achieve value-based care, they are looking more carefully at technologies that are cost-effective and operationally effective, and continue to put the patient in the center of care, whether it be within their four walls or increasingly in the home and their communities. Of the 120 respondents:



CHALLENGES IN POPULATION HEALTH MANAGEMENT

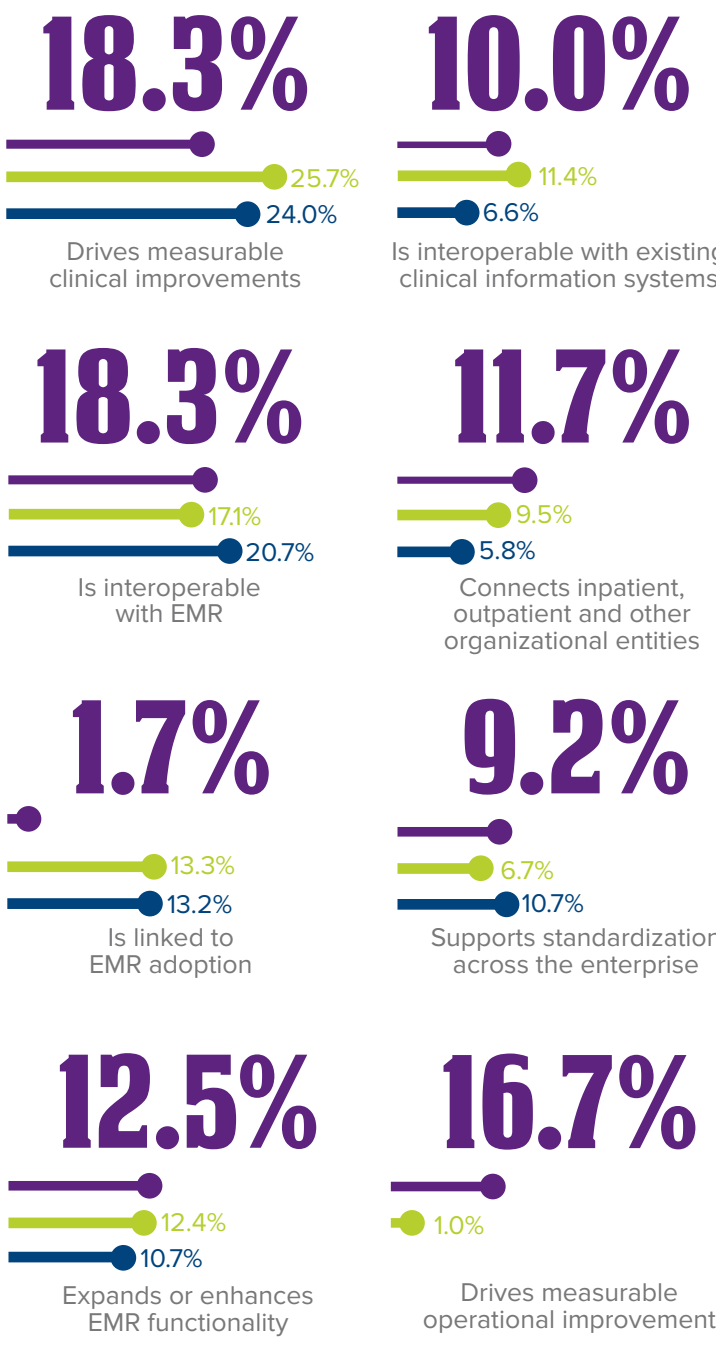
While care coordination is still a challenge overall, more respondents ranked financial investments and patient engagement and adherence as the biggest single population health challenge.



The percentages above represent respondents who selected the option as the biggest challenge. On a scale of 1 to 3, with 1 being the biggest challenge and 3 being the third biggest challenge.

OPERATIONAL IMPROVEMENT A KEY CONSIDERATION FOR PURCHASING DECISIONS

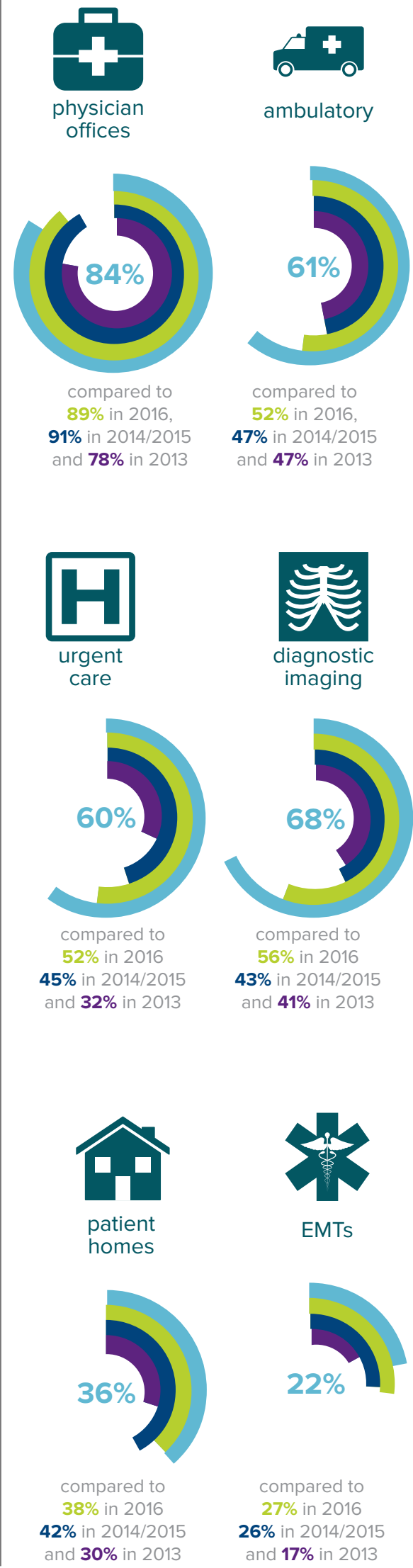
While driving measurable clinical improvements is still the most important consideration for clinical technology purchasing decisions, driving measurable operational improvement has significantly risen in importance.



The percentages above represent respondents who selected the option as the most important on a scale of 1 to 5, with 1 being the most important and 5 being the least important.

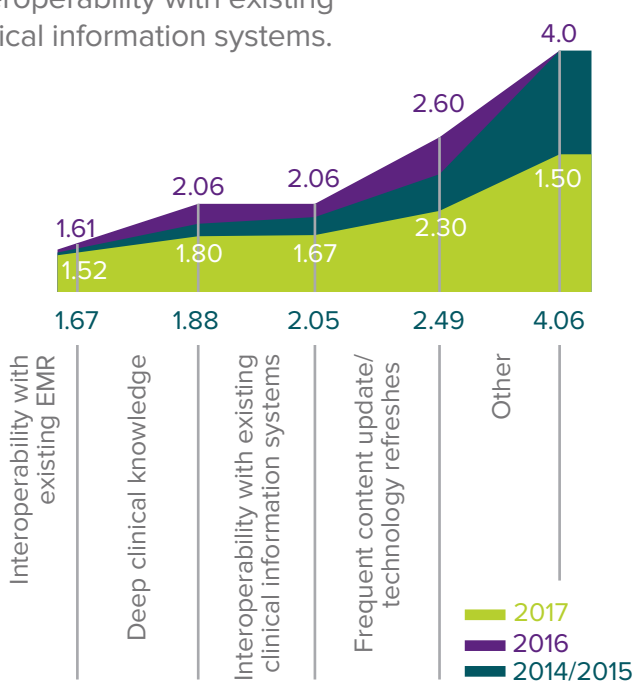
ROLE OF HEALTHCARE IT SHIFTS

As patient-centered care continues to expand into the community, diagnostic imaging centers, ambulatory surgery centers and urgent care have seen increases in the deployment of IT systems.



INTEROPERABILITY IS KEY

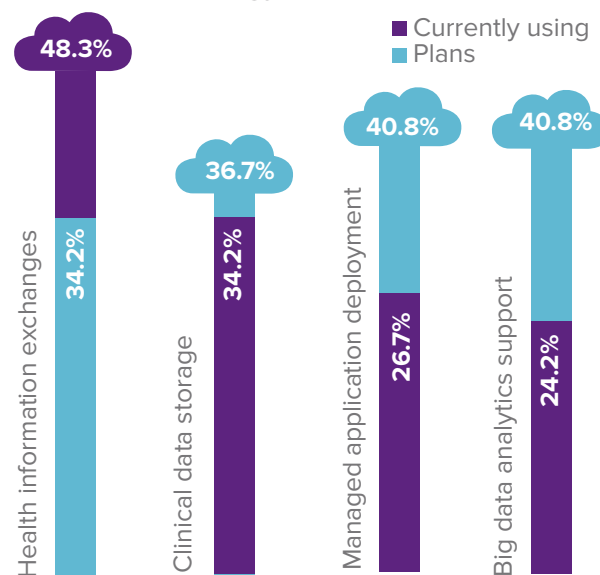
Healthcare organizations signaled that they want to partner with a clinical informatics vendor that has expertise in interoperability with existing clinical information systems.



(Importance was rated on a 1 to 5 scale with 1 being the most important and 5 being the least important. For those who ranked "other" as the most important, support, reliability and ease of use were the most common attributes listed.)

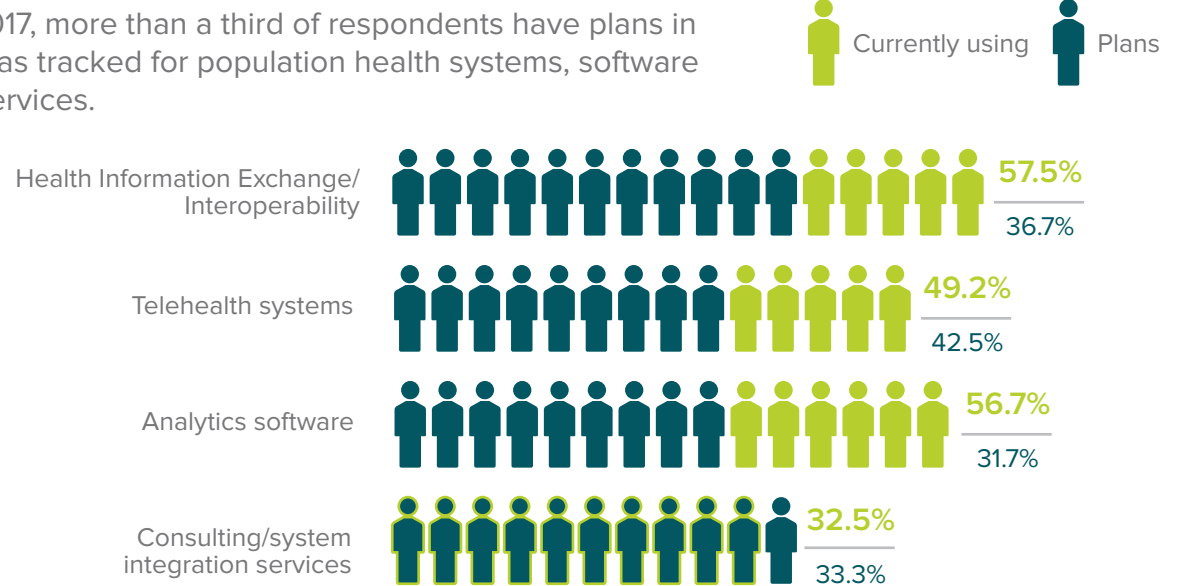
CLOUD-BASED TECHNOLOGY

Healthcare organizations increased their use of cloud-based technology for HIEs in 2017.



POPULATION HEALTH PLANS

For 2017, more than a third of respondents have plans in all areas tracked for population health systems, software and services.



PROGRAM IMPLEMENTATION

Among the population health management areas currently being focused on in 2017 by healthcare organizations, the biggest increases in use are in acute-care programs, home monitoring devices and aging well or elderly care programs.

